

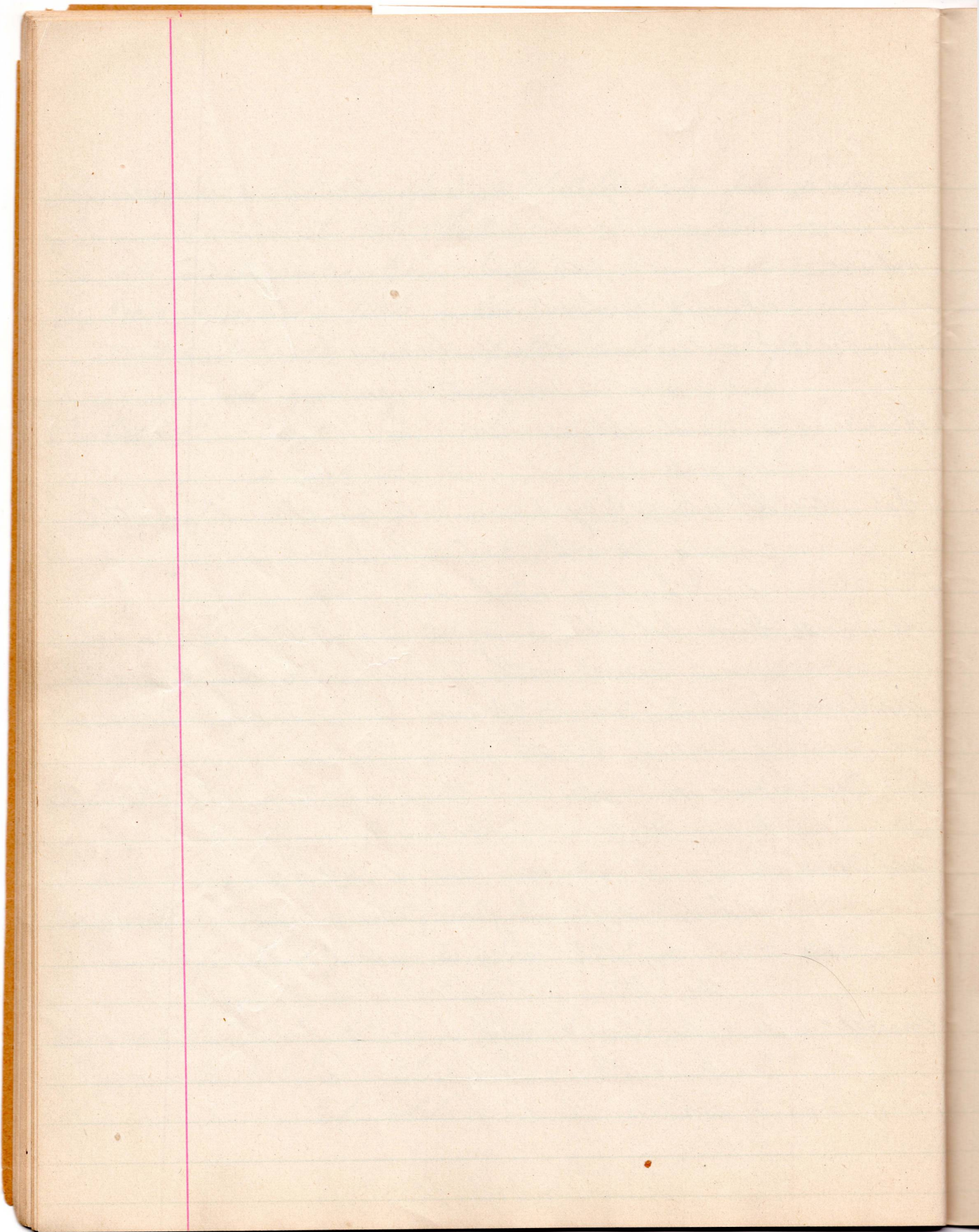
- Thurs Nov 18. A little shift of snow, ground white. Our men cleaning up Barley. Aunt Nellie at an extra W.A. at Miss Wiley and stayed at Brothers for tea. Uncle & I at Mr Bracks funeral.
- Fri Nov 19. A little covering of soft snow all gone. by noon. Tom Farr here for dinner and tea.
- Sat Nov 20. Fine day and quiet mild. Uncle took a load of Barley to Richmond Hill in the morning.
- Sun Nov 21. Rained a little early in the morning then cleared but dull. I went to Fisherville to hear a lady missionary speak. Church crowded. We were at evening Church.
- Mon Nov 22. Rained heavily nearly all day, the trees are iced over quite heavy. East storm poured heavily snowed night.
- Tue Nov 23. Fine but cold quite a covering of snow and ice. Uncle went to Richmond with Barley. I went to Toronto in the afternoon remained at Alices over night. Dick not here this week.
- Wed Nov 24. Fine and bright but very cold, Mrs Ward buried. to day. I came home from Toronto.
- Thurs Nov 25. Fine but cold and frosty. Uncle at Thornhill in the evening.
- Fri Nov 26. Fine and milder, the snow nearly all gone. Uncle at Allans mill.
- Sat Nov 27. Fine and mild quite muddy. Dr Campbell here for tea a cow sick. I called to see Annie Teasdale.

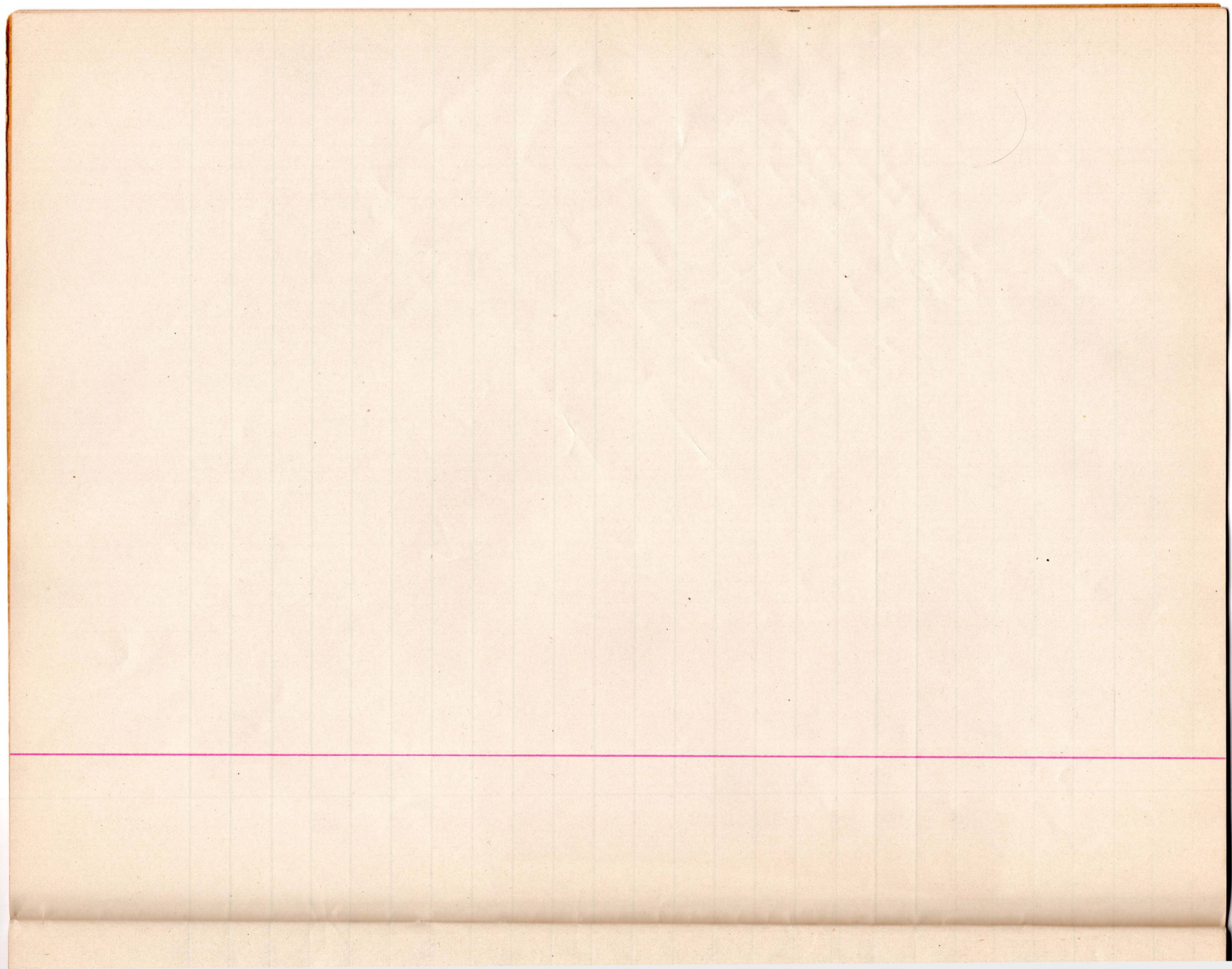
- Sun Nov 28. Fine day mild. Uncle, Aunt Nellie and I at Church. Mr and Mrs Breaky called. It rained a little in the evening.
- Mon Nov 29. Fine and mild. We washed and churned, and Auntie made Brandy Snaps. Annie came out for the afternoon. Uncle and Auntie took a home and butter out.
- Tue Nov 30. Fine bright day, frost at night. Annie and Clara Teasdale here for tea and Frank to spend the evening. Uncle took Barley.
- Wed Dec 1. Beautiful day muddy but very bright and mild. Charlie and Grant brought pork over.
- Thur Dec 2. Fine bright day, the roads nice and dry. Uncle took us to W. A. meeting at Mrs Breaky's.
- Fri Dec 3. Fine and bright. Aunt Nellie at Willis for a while. Uncle met Aunt Mattie at the car.
- Sat Dec 4. Fine day. Uncle in Toronto in the afternoon.
- Sun Dec 5. Fine day. Uncle, Aunt Nellie and I at Church. I went to Fisherville. Uncle sick through night.
- Mon Dec 6. Fine but very high wind all day and cold. ^{Last day for} Charlie and Frank Teasdale here in eve-
- Tue Dec 7. Rained and sleeted with east wind then turned cold at night. Mick came in afternoon.
- Wed Dec 8. Very cold all day. Uncle went to Guelph fair and frosty. all frozen up hard.

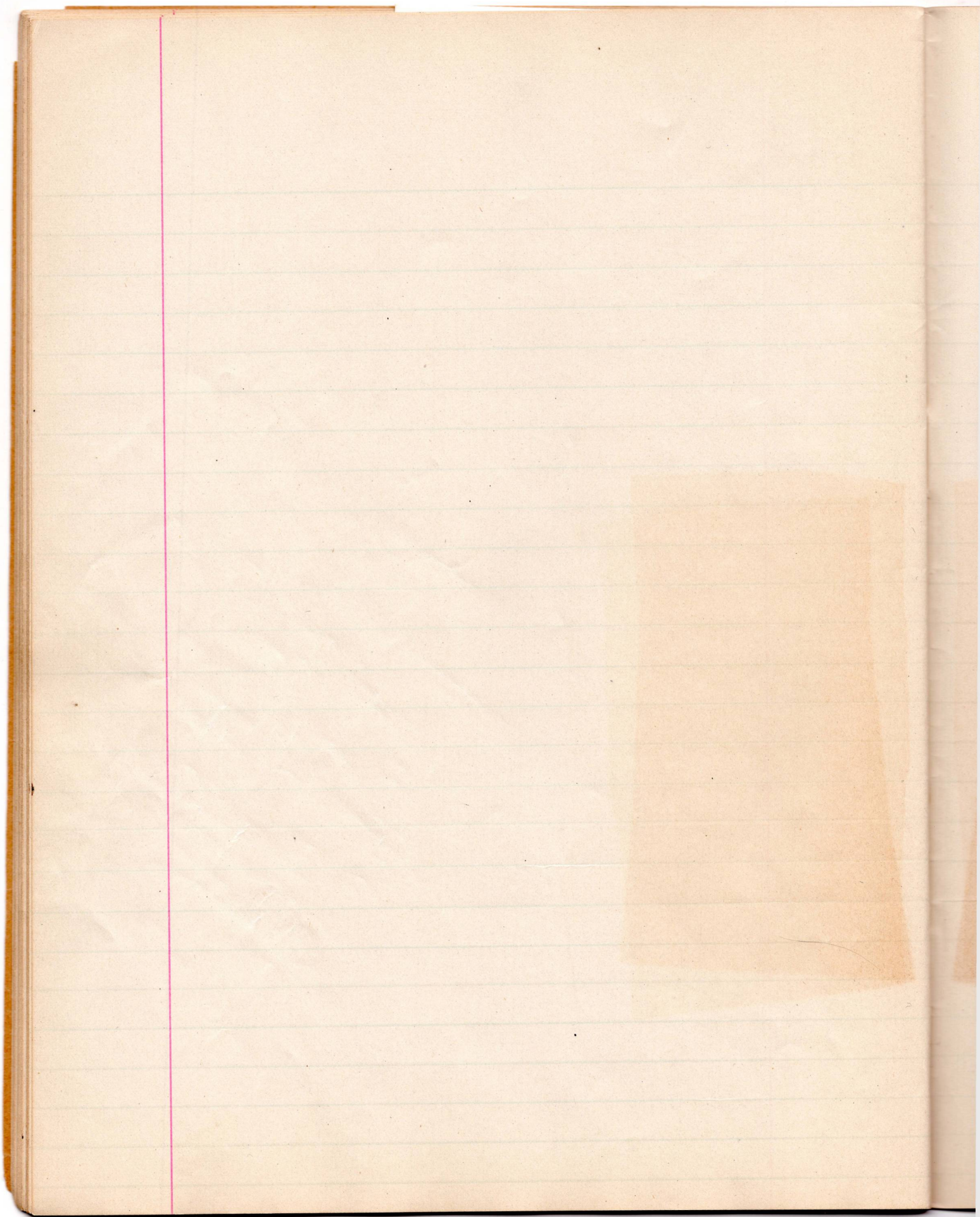
- Thurs Dec 29. Fine but dreadfully cold. Soft water pump stuck. I called at Miss Phillips in the afternoon. Uncle came home. Received John Teasdale's cake.
- Fri Dec 10. Fine and a little milder. we got pump thrown and Uncle made up the cistern. I put on winter gurnsey. to day.
- Sat Dec 11. Fine but cold. Aunt Nellie and I in Toronto. Lizzie out for tea. Uncle took her home in the evening.
- Sun Dec 12. Fine in morning but started to storm at noon. We did not go to Church. Uncle at Willis for a while in the afternoon. East storm.
- Mon Dec 13. Rained and sleeted from the east all day. a dreadful day but milder. Washed and churned.
- Tue Dec 14. Fine but snowy. Some Cutters out. Uncle at one Park. I went out to the Convention in the Methodist Ch.
- Wed Dec 15. Fine day moderately cold. We butchered a beautiful day for it. Thomas Park also Willie and John Ellis here.
- Thurs Dec 16. Fine day, we made standing pies so in all.
- Fri Dec 17. Fine day a little colder. Auntie took box to Station for Aunt Jennie. Uncle at Shop in the afternoon. Our Cutter out first time.
- Sat Dec 18. Fine bright day. Uncle in Toronto. called at Aunt Lizzies with a box.
- Sun Dec 19. Fine but cold. Uncle, Aunt Mattie and I went to evening Church.

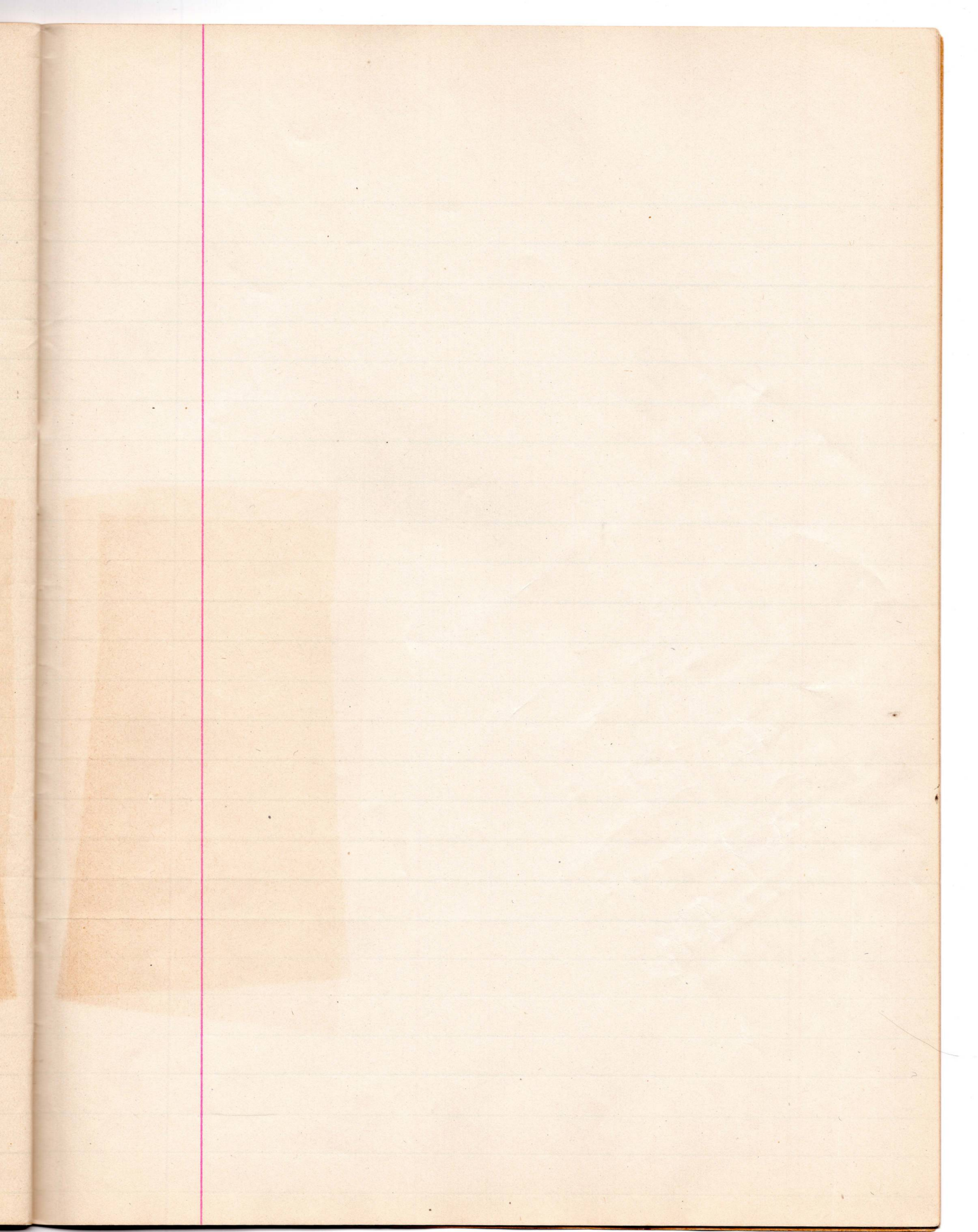
- Mon Dec 20. Fine but very cold. We were all over at Willie's butchering.
- Tue Dec 21. Fine day but cold. Light Coal Feeders at night of ²⁰
- Wed Dec 22. Fine and a little milder. We went to Christmas tree at Thornhill Presbyterians.
- Thur Dec 23. Fine day, moderately cold. The boys here. Aunt Martha and I went to decorate. Uncle came for us.
- Fri Dec 24. Fine and mild. we were at home. Auntie cleared the geese.
- Sat Dec 25. Christmas Day. Snowing all day. cleared in the evening. We all went out in Sleigh. I remained for skating, good ice.
- Sun Dec 26. Fine but cold. I went up to Church and came home with Uncle and Aunt Nellie.
- Mon Dec 27. Fine and moderately cold. We washed and churned fire outside. a little flurry of snow.
- Tue Dec 28. Fine day, excellent sleighing. Uncle at Richmond Hill with wheat in the afternoon.
- Wed Dec 29. Fine and very, very cold. down \pm below zero. no wind but extreme frost. Uncle & Auntie at Thornhill.
- Thur Dec 30. Fine day, still frosty. I walked out to Thorn hill in the afternoon. bright and sunny.
- Fri Dec 31. Fine, bright and cold. I went for a drive with Uncle to Henry Fishers, and Mr Graingers to ask for hands for thrashing.

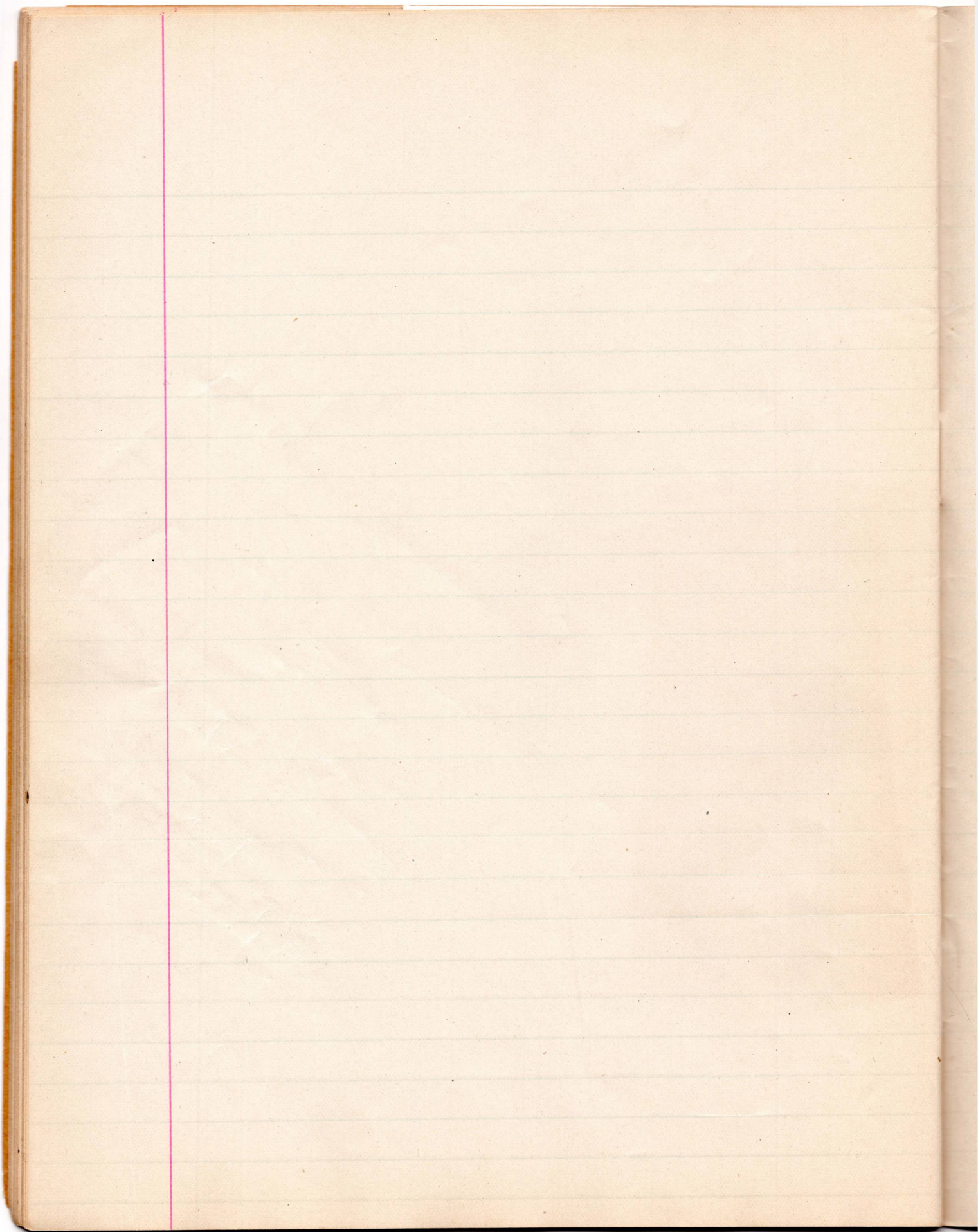
End of 1909.

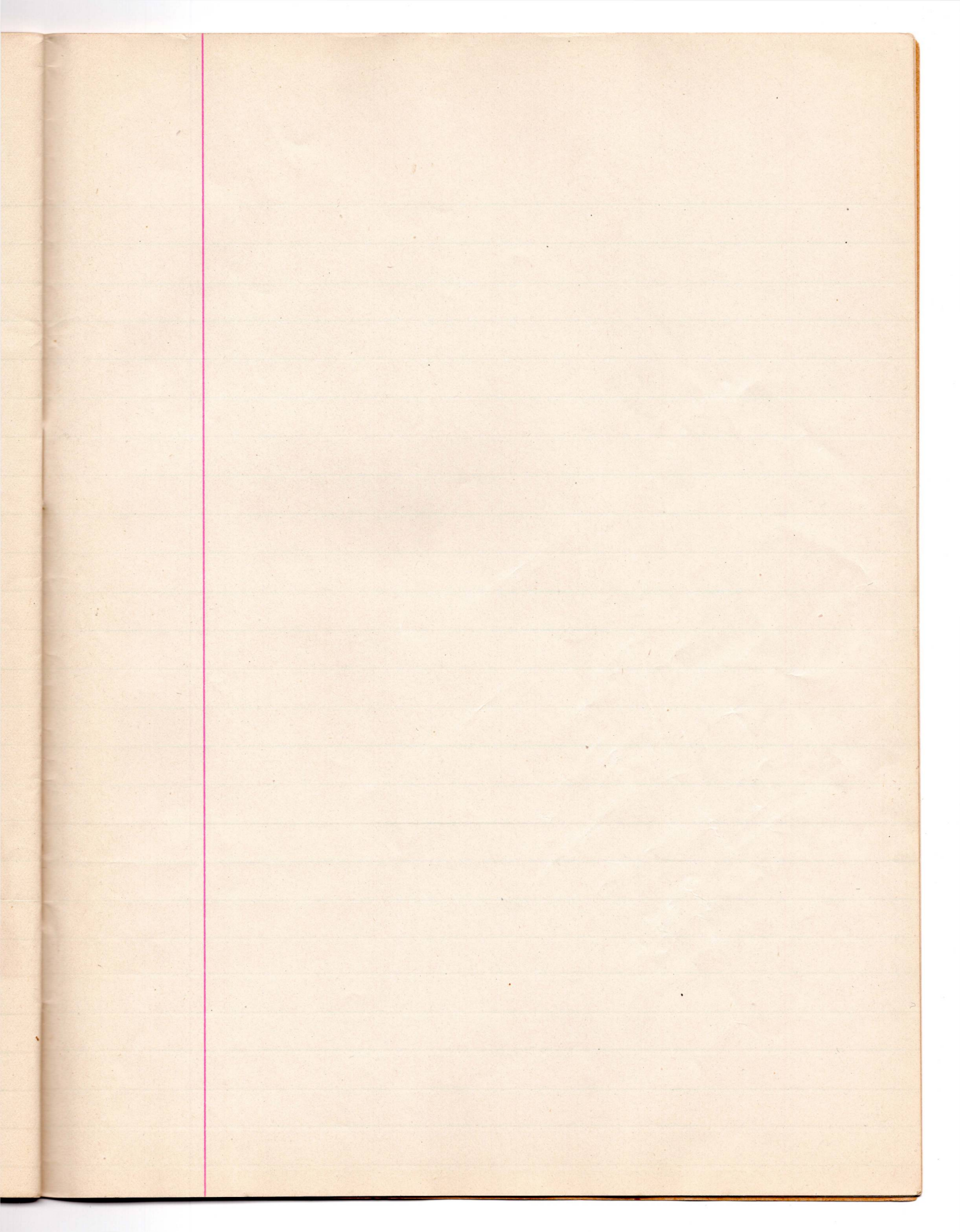


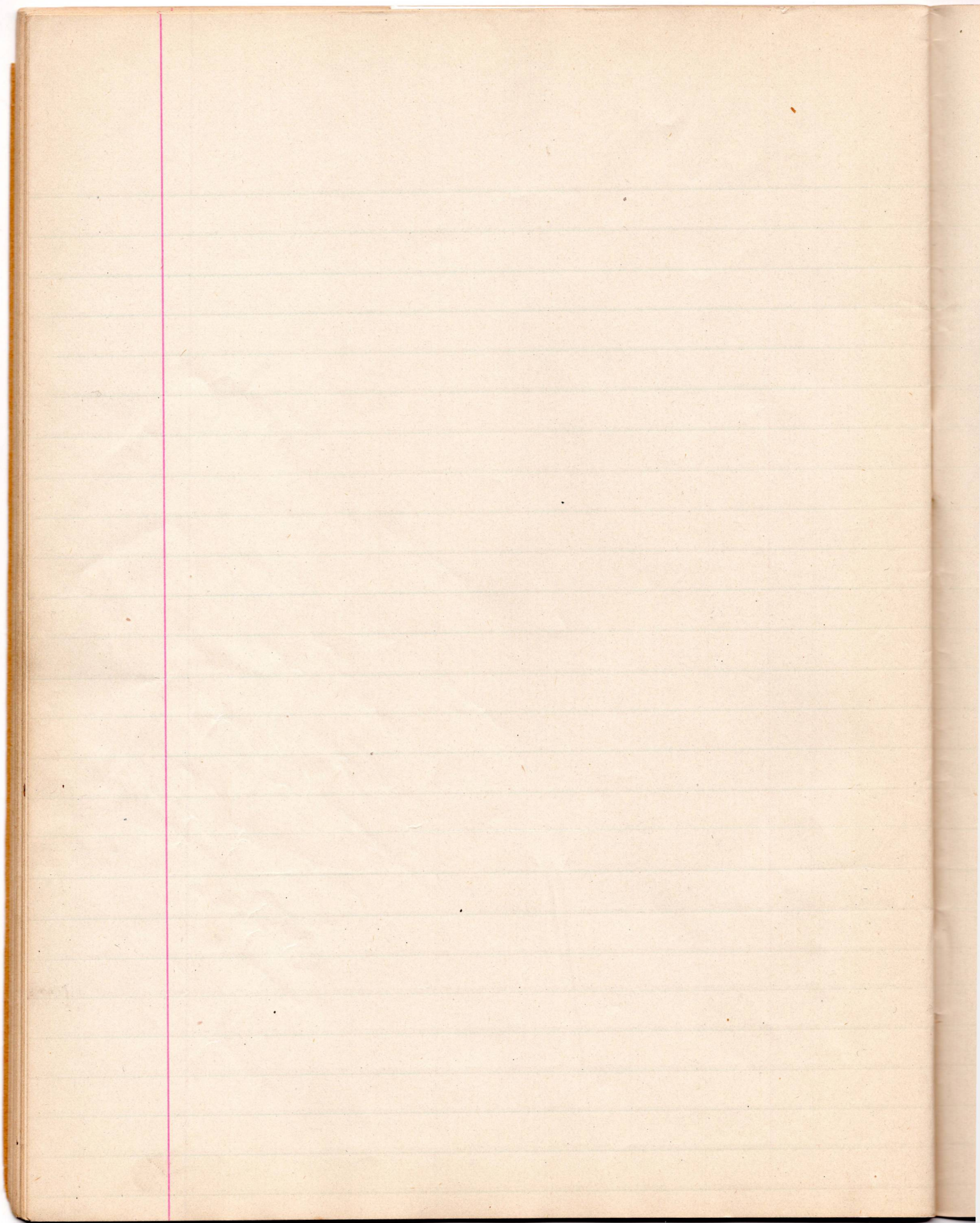


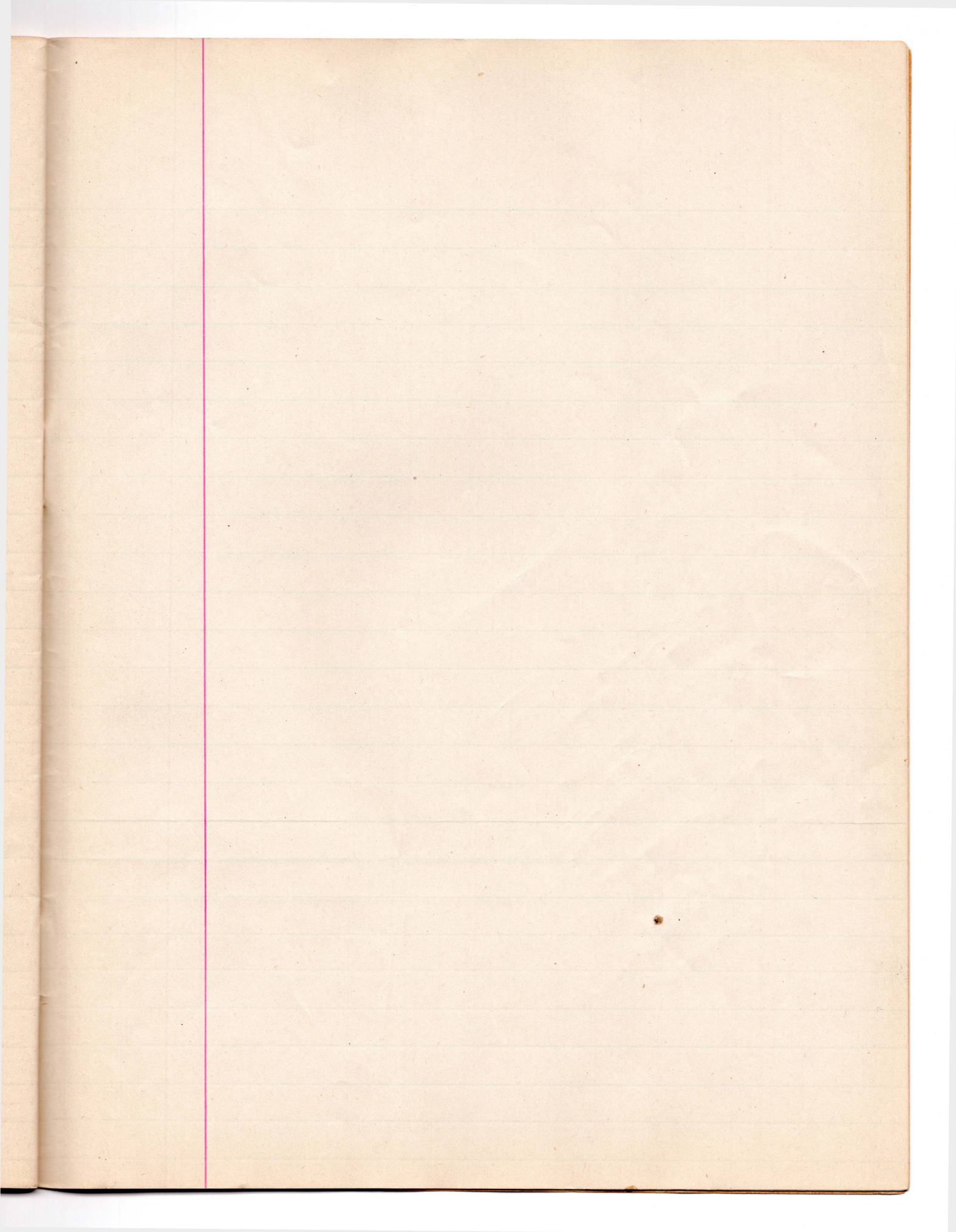


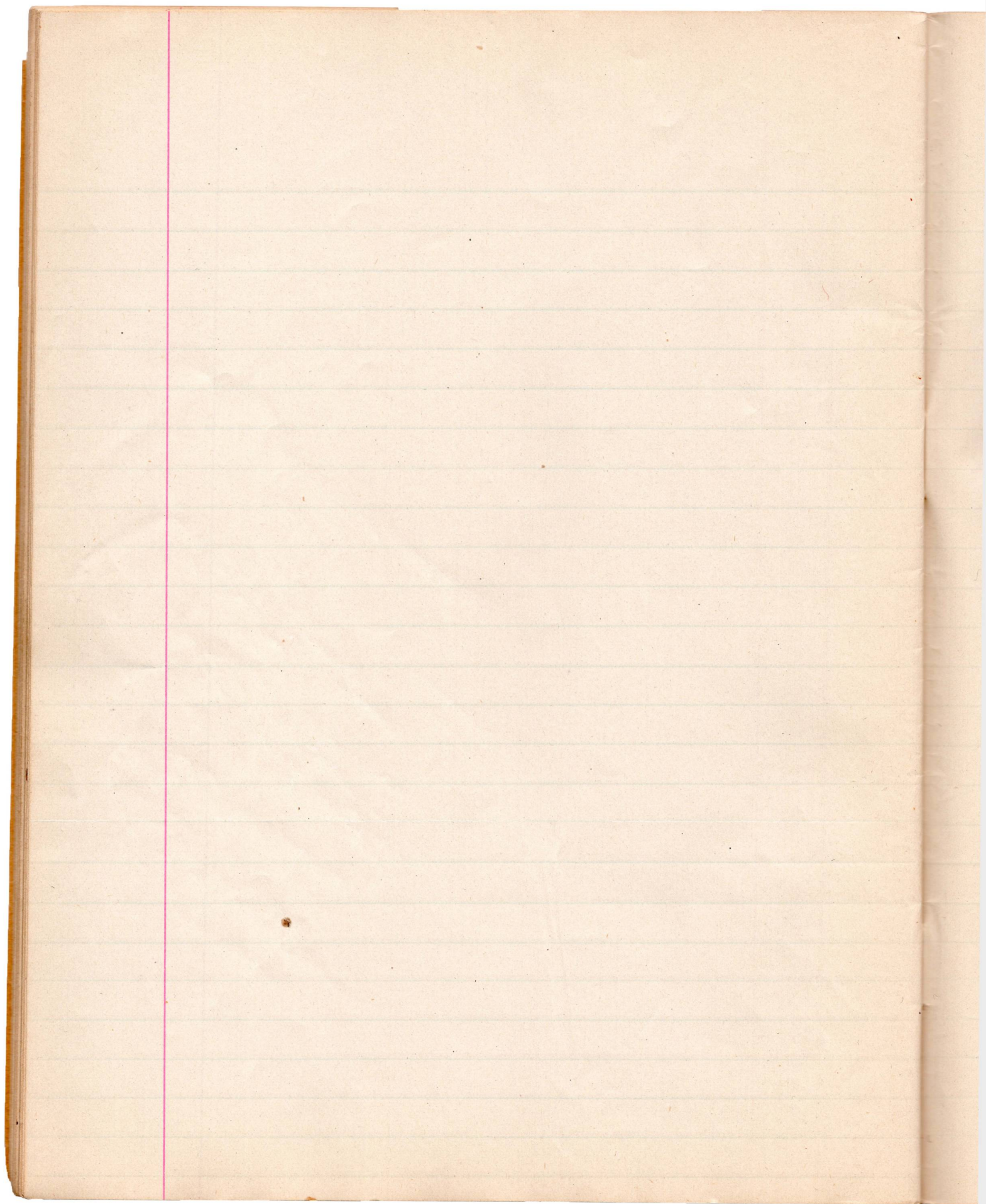


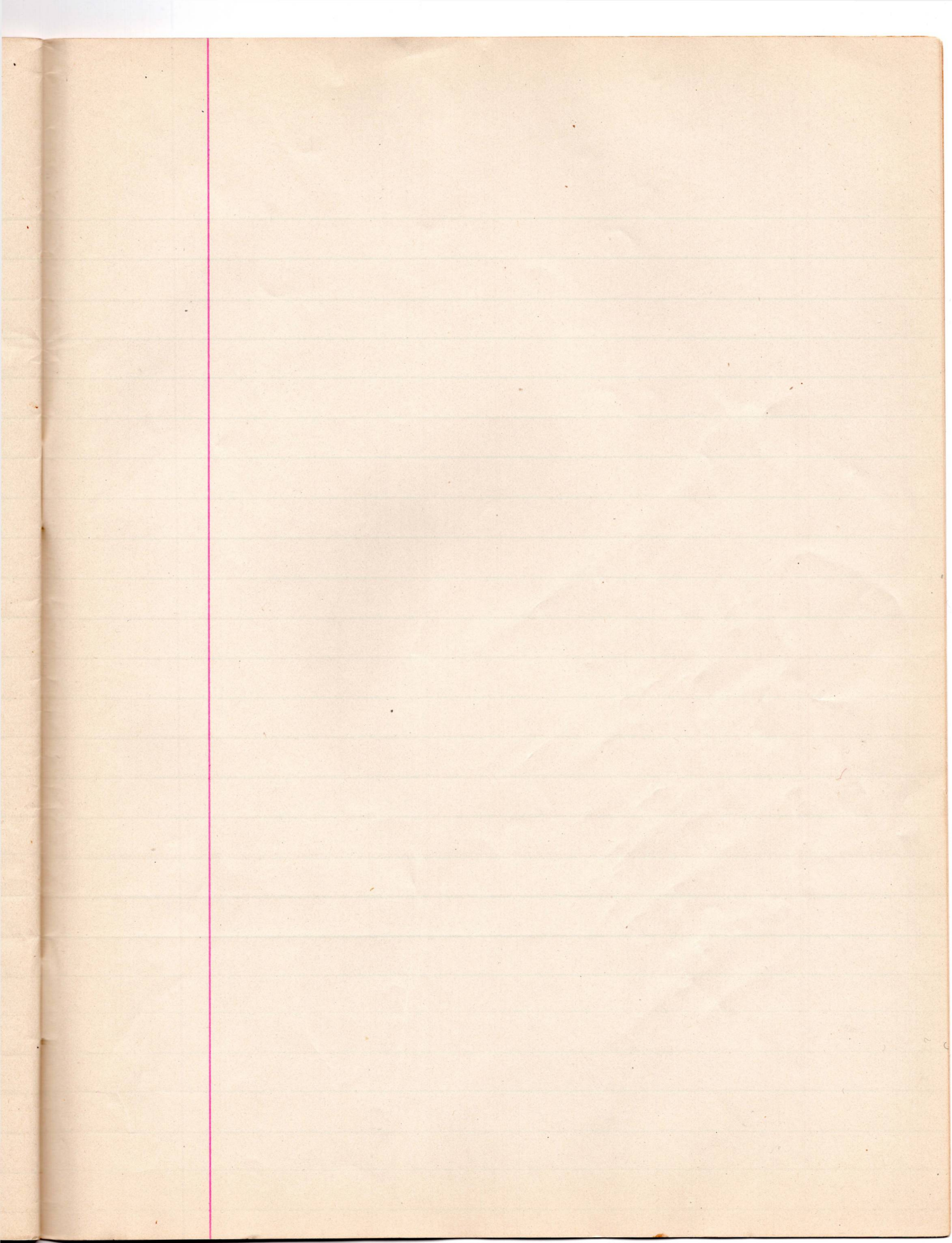


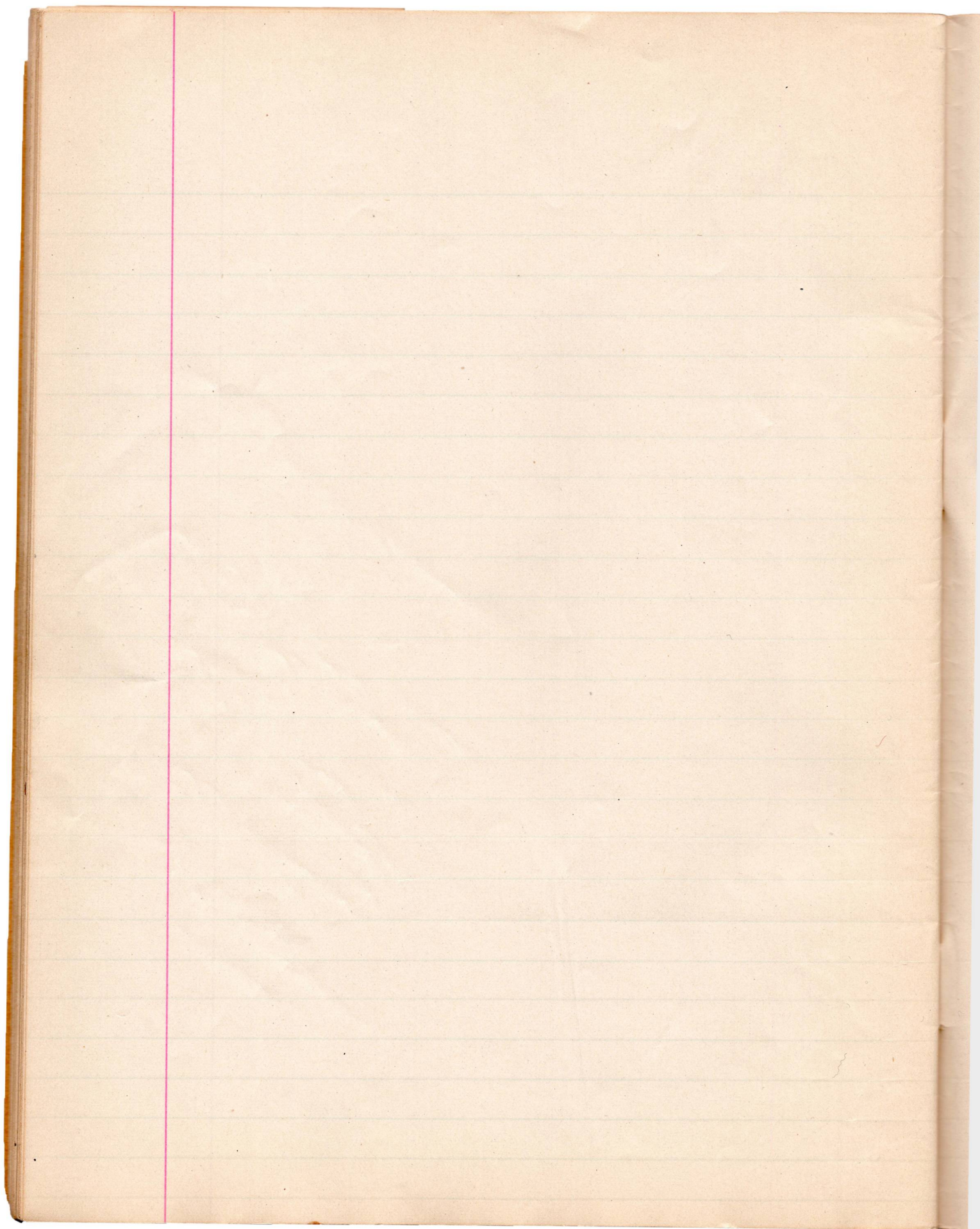


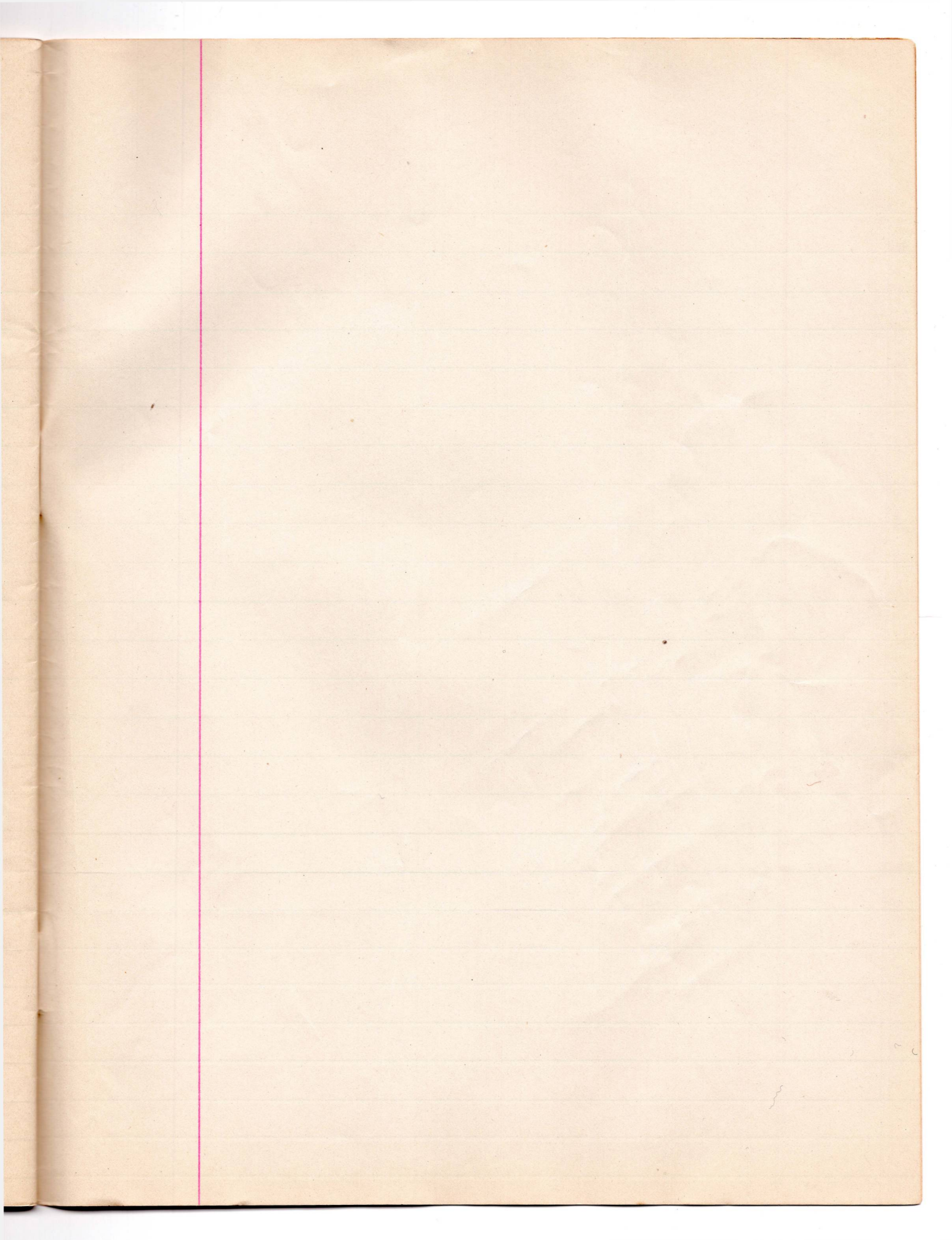


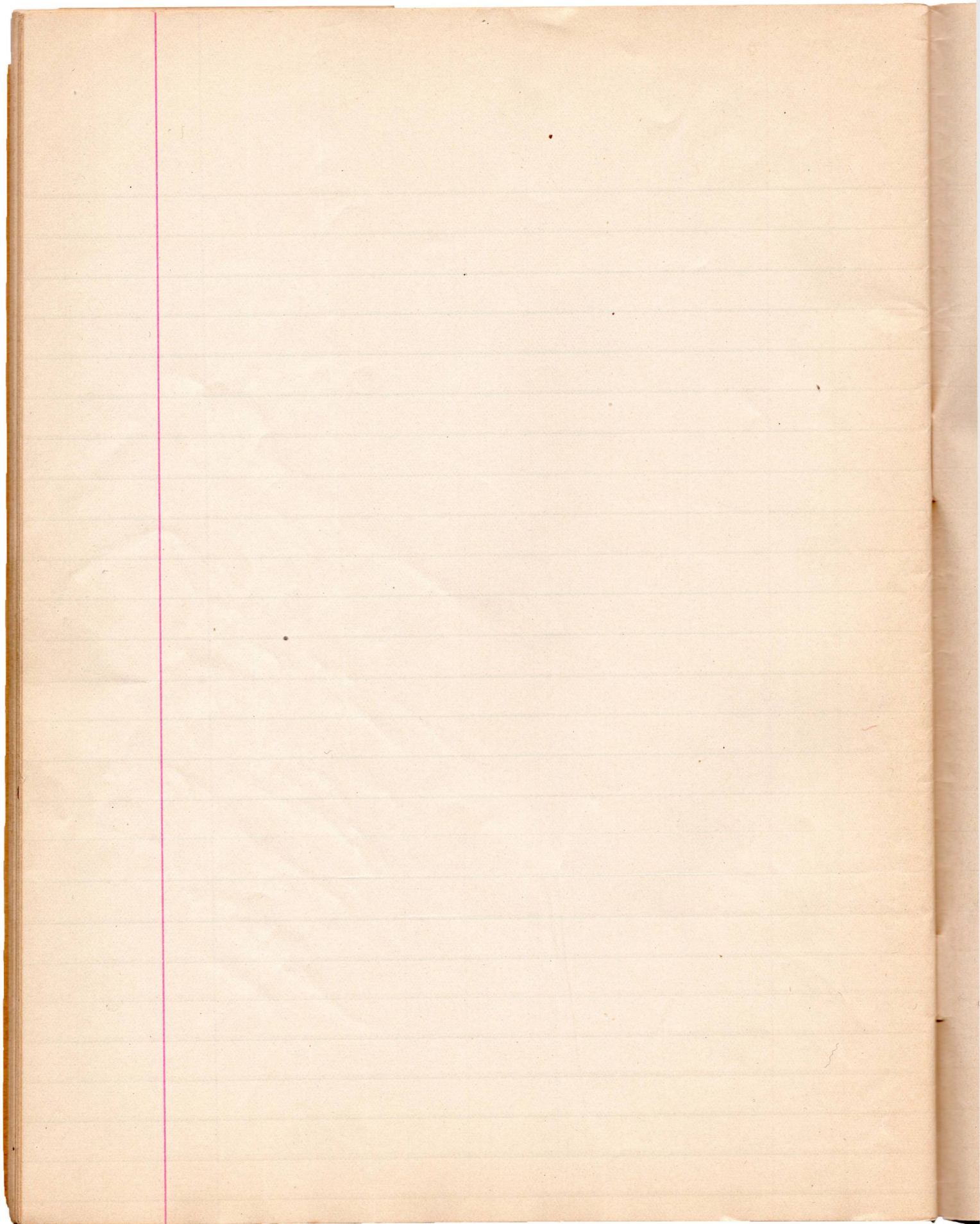


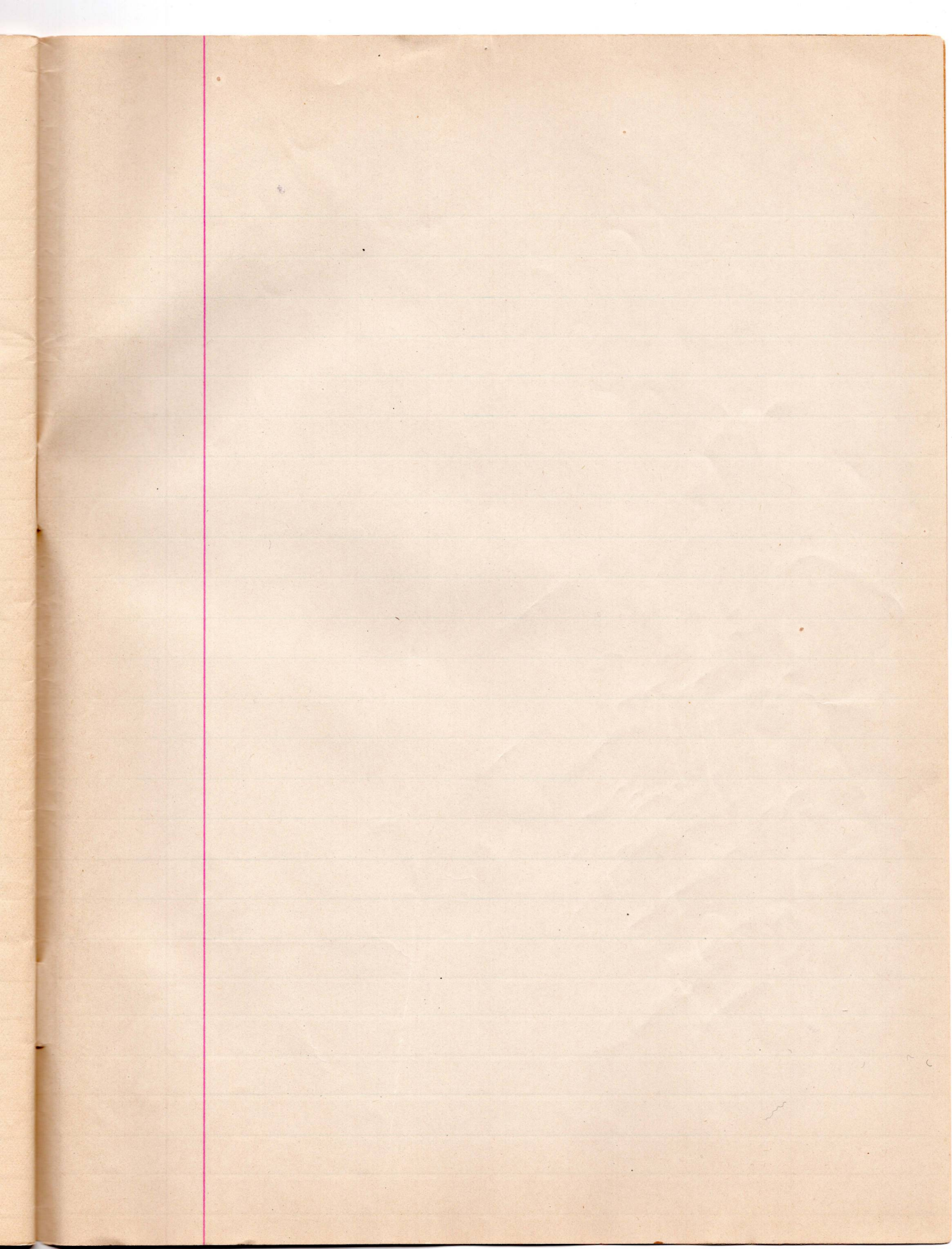


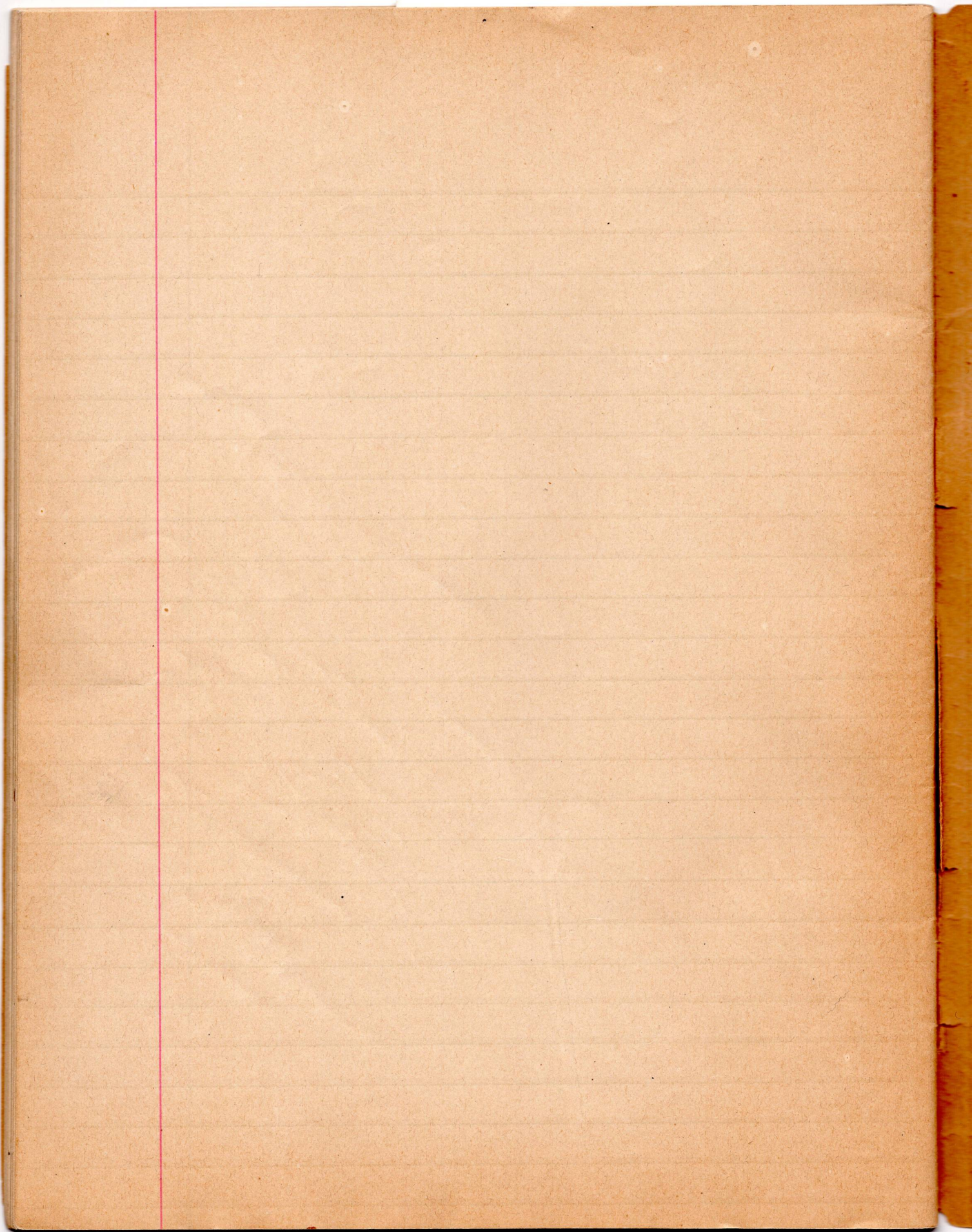


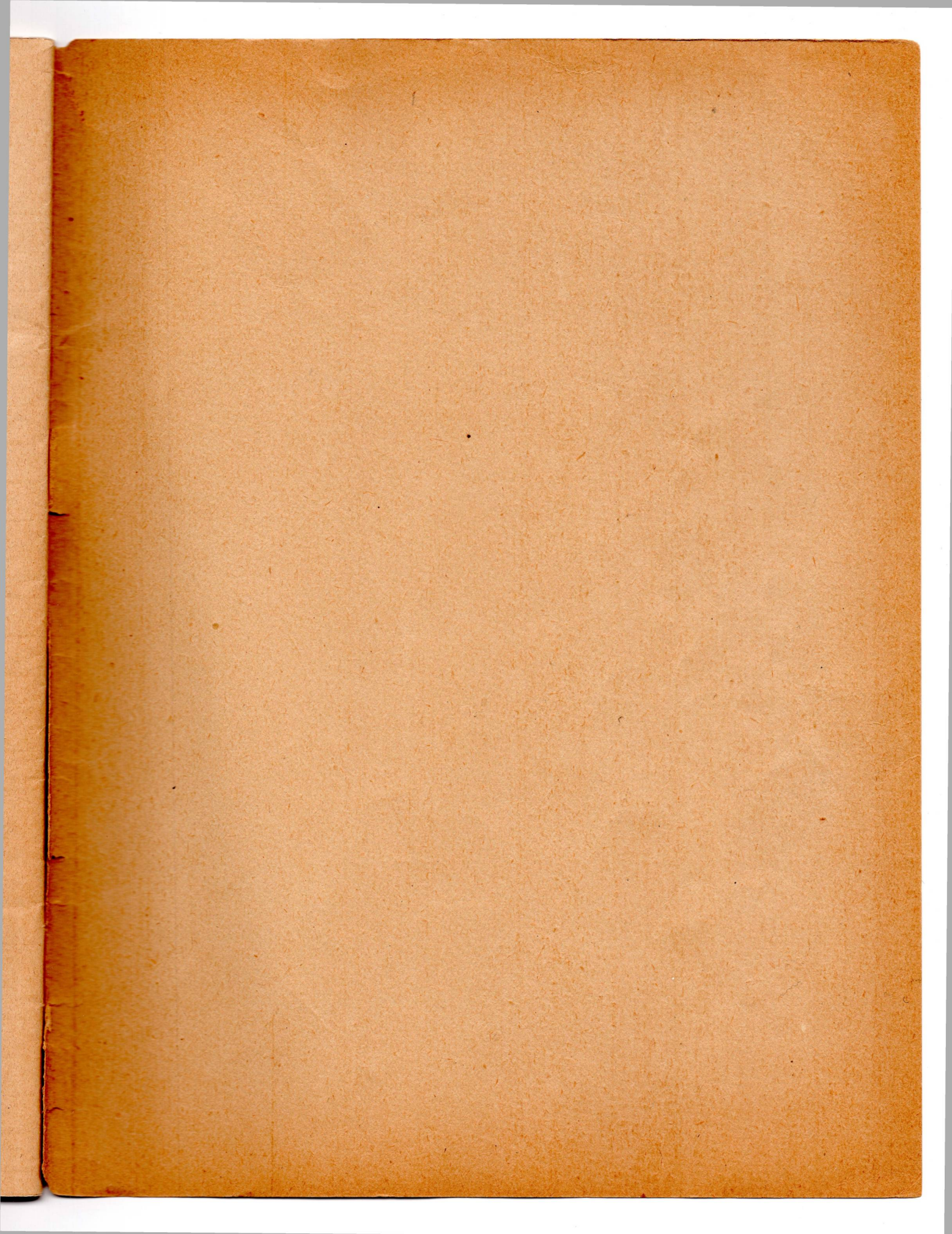












ARITHMETICAL TABLES.

<p style="text-align: center;">Numeration Table</p> <p>Units 1 Tens 1 2 Hundreds 1 2 3 Thousands 1, 2 3 4 Tens of Thousands 1 2, 3 4 5 Hundreds of Thousands 1 2 3, 4 5 6 Millions 1, 2 3 4, 5 6 7 Tens of Millions 1 2, 3 4 5, 6 7 8 C. of Millions 1 2 3, 4 5 6, 7 8 9</p> <p style="text-align: center;">Sterling Money Table</p> <p>4 Farthing 1 Penny <i>d.</i> 12 Pence 1 Shilling <i>s.</i> 2 Shillings 1 Florin 2 Shillings & Sixp. 1 Half crown 5 Shillings 1 Crown <i>cr.</i> 10 Shillings 1 Half Sov. 20 Shillings 1 Sov. or 1 Pound \pounds 21 Shillings 1 Guinea</p> <p style="text-align: center;">Arithmetical Signs</p> <p>+ Plus; Sign of Addition - Minus; Sign of Subtraction × Sign of Multiplication ÷ Sign of Division = Sign of Equality > or < Sign of Inequality ∴ Sign of Proportion √ Sign of Square Root ∛ Sign of Cube Root ° Degree, ' Minute, " Second ∴ Therefore ∥ Denotes Parallelism ⊥ Denotes a Perpendicular</p> <p style="text-align: center;">Avoirdupois Weight</p> <p style="text-align: center;">FOR ALL GOODS EXCEPT GOLD, SILVER, AND JEWELS</p> <p>16 Drams 1 Ounce <i>oz.</i> 16 Ounces 1 Pound <i>lb.</i> 14 Pounds 1 Stone <i>st.</i> 28 Pounds 1 Quarter <i>qr.</i> 4 Quarters 1 Hundredw't. <i>cwt.</i> 20 Cwt. 1 Ton <i>tn.</i></p> <p style="text-align: center;">Hay and Straw Weight</p> <p>36 lb Straw 1 Truss 56 lb Old Hay 1 Truss 60 lb New Hay 1 Truss 36 Trusses 1 Load</p>	<p style="text-align: center;">Troy Weight</p> <p style="text-align: center;">FOR GOLD, SILVER AND JEWELS</p> <p>24 Grains 1 Pennyw't. <i>dwt.</i> 20 Dwt. 1 Ounce <i>oz.</i> 12 Ounces 1 Pound <i>lb.</i></p> <p style="text-align: center;">Apothecaries' Weight</p> <p style="text-align: center;">FOR MIXING MEDICINES</p> <p>20 Grains 1 Scruple <i>scr.</i> 3 Scruples 1 Dram <i>dr.</i> 3 Drams 1 Ounce <i>oz.</i> 12 Ounces 1 Pound <i>lb.</i></p> <p style="text-align: center;">Commercial Signs</p> <p>£ (Latin <i>libra</i>) a Pound Sterling lb (Latin <i>libra</i>) a Pound Weight \$ Dollars / Shillings; as 4/6 = 4s. 6d. @ At or to; as, wood @ \$4 per cord ⊘ Per; as, Rice 4c ⊘ lb 13.38 % Per cent.; as commission at 2½% = % Account; as S. Oliver in % with Index } Brace</p> <p style="text-align: center;">Long or Linear Measure</p> <p>12 Lines 1 Inch <i>in.</i> 12 Inches 1 Foot <i>ft.</i> 3 Feet 1 Yard <i>yd.</i> 2 Yards 1 Fathom <i>f.</i> 5½ Yards 1 Pole 40 Poles 1 Furlong <i>fur.</i> 8 Furlongs or 1,760 Yards, 1 Mile</p> <p style="text-align: center;">Cloth Measure</p> <p>2½ Inches 1 Nail 4 Nails 1 Quarter of a Yard 4 Quarters 1 Yard</p> <p style="text-align: center;">Solid or Cubic Measure</p> <p>1728 Cubic Inches 1 Cubic Foot 27 Cubic Feet 1 Cubic Yard 24½ Cubic Feet 1 Solid Perch 12½ Cubic Feet 1 Solid Perch 128 Cubic Feet 1 Cord</p>	<p style="text-align: center;">Imperial Heaped Measure</p> <p style="text-align: right;">Lbs. Avoird. of water</p> <p>8 Gallons 1 Bushel = 80 3 Bushels 1 Sack = 240 12 Sacks 1 Chaldron = 2380</p> <p style="text-align: center;">Imperial Dry Measure</p> <p style="text-align: right;">Avoird. of Water</p> <p>2 Glasses 1 Noggin = 0 5 4 Noggins 1 Pint = 1 4 2 Pints 1 Quart = 2 8 4 Quarts 1 Gallon = 10 0 2 Gallons 1 Peck = 20 0 4 Pecks 1 Bushel = 60 0 8 Bushels 1 Quarter = 640 0</p> <p style="text-align: center;">Square Measure</p> <p>144 Square Inches 1 Square Foot 9 Square Feet 1 Square Yd. 30½ Square Yards 1 Square Pole 40 Square Poles 1 Rood 4 Roods 1 Acre</p> <p style="text-align: center;">Table of Motion</p> <p>60" Seconds 1 Minute 60' Minutes 1 Degree 30" Degrees 1 Sign 12" Signs, of 360° the Circle of the earth</p> <p style="text-align: center;">Table of Time</p> <p>60 Seconds 1 Minute 60 Minutes 1 Hour 24 Hours 1 Day 7 Days 1 Week 4 Weeks 1 Month 365 Days 1 Year 366 Days 1 Leap Year 52 Weeks 1 Year 12 Calendar or 13 Lunar Months 1 Year</p> <p style="text-align: center;">Days in the Months</p> <p>Thirty days hath September, April, June and November; All the rest, have thirty-one, Except February alone, Which has but twenty-eight days clear And twenty-nine in each Leap Year</p>
---	---	--

MULTIPLICATION TABLE.

Twice	3	4	5	6	7	8	9	10	11	12
	TIMES	TIMES	TIMES	TIMES	TIMES	TIMES	TIMES	TIMES	TIMES	TIMES
1 are 2	1 are 3	1 are 4	1 are 5	1 are 6	1 are 7	1 are 8	1 are 9	1 are 10	1 are 11	1 are 12
2 .. 4	2 .. 6	2 .. 8	2 .. 10	2 .. 12	2 .. 14	2 .. 16	2 .. 18	2 .. 20	2 .. 22	2 .. 24
3 .. 6	3 .. 9	3 .. 12	3 .. 15	3 .. 18	3 .. 21	3 .. 24	3 .. 27	3 .. 30	3 .. 33	3 .. 36
4 .. 8	4 .. 12	4 .. 16	4 .. 20	4 .. 24	4 .. 28	4 .. 32	4 .. 36	4 .. 40	4 .. 44	4 .. 48
5 .. 10	5 .. 15	5 .. 20	5 .. 25	5 .. 30	5 .. 35	5 .. 40	5 .. 45	5 .. 50	5 .. 55	5 .. 60
6 .. 12	6 .. 18	6 .. 24	6 .. 30	6 .. 36	6 .. 42	6 .. 48	6 .. 54	6 .. 60	6 .. 66	6 .. 72
7 .. 14	7 .. 21	7 .. 28	7 .. 35	7 .. 42	7 .. 49	7 .. 56	7 .. 63	7 .. 70	7 .. 77	7 .. 84
8 .. 16	8 .. 24	8 .. 32	8 .. 40	8 .. 48	8 .. 56	8 .. 64	8 .. 72	8 .. 80	8 .. 88	8 .. 96
9 .. 18	9 .. 27	9 .. 36	9 .. 45	9 .. 54	9 .. 63	9 .. 72	9 .. 81	9 .. 90	9 .. 99	9 .. 108
10 .. 20	10 .. 30	10 .. 40	10 .. 50	10 .. 60	10 .. 70	10 .. 80	10 .. 90	10 .. 100	10 .. 110	10 .. 120
11 .. 22	11 .. 33	11 .. 44	11 .. 55	11 .. 66	11 .. 77	11 .. 88	11 .. 99	11 .. 110	11 .. 121	11 .. 132
12 .. 24	12 .. 36	12 .. 48	12 .. 60	12 .. 72	12 .. 84	12 .. 96	12 .. 108	12 .. 120	12 .. 132	12 .. 144